

IT TAKES A COMMUNITY TO MAKE HOSPICE HAPPEN

Hospice Community News

SPRING 2023



Te Kahu Pairuri
ki Whanganui

hospice
Whanganui



Christmas Edition



Remember your loved ones and support hospice at Farmers this Christmas

Since November 16th the awesome team at Farmers has been raising funds for Hospice Whanganui. This is the 10th year that Farmers have supported us in the lead up to Christmas with customers generously donating around \$10,000 each year!

There are two ways Farmers customers can support their hospice until Christmas Eve; by donating to the Christmas Tree of Remembrance, or by purchasing a limited-edition hand painted hospice bauble. Each bauble is \$15.99 and thanks to the generous support of Farmers, the full amount from every purchase stays in our community and is donated to Hospice Whanganui. Farmers also passes on 100% of all customer donations from the Tree of Remembrance.



This year's Bauble

The iconic red flowers of the pōhutukawa bloom each year around Christmas time, earning it the name 'New Zealand's Christmas Tree'. Pōhutukawa is a special symbol of summer found only here in Aotearoa.

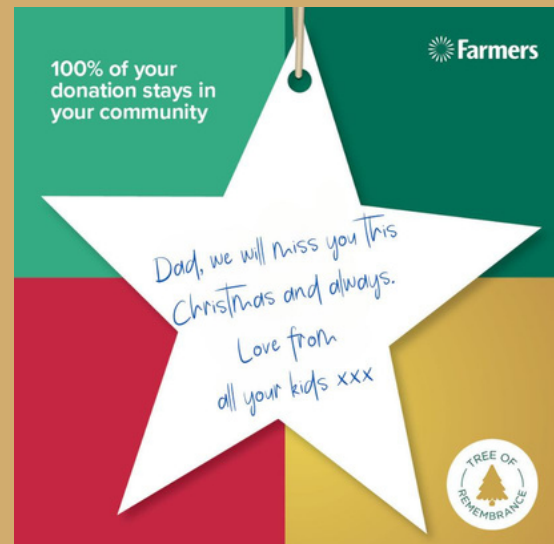
Hospice provides a wrap-around service encompassing compassion and comfort. Care is provided for anyone with a life limiting condition and their whānau.

Thank you for supporting hospice this Christmas!

Hospice Whanganui is supported by:



WRITE A SPECIAL NOTE TO HANG ON THE TREE OF REMEMBRANCE



You can support hospice by remembering someone special. Simply make a donation at your local Farmers and you will receive a card, where you can write a message and place it on the hospice Tree of Remembrance.

"I'll always feel you close to me and though you're far from sight, I'll search for you among the stars that shine on Christmas night"

One of my favourite summer trips is to spend a few days canoeing or kayaking down the Whanganui awa. There is something about paddling through the towering, majestic cliffs, bracing for the rapids (sometimes ending up upside down through the rapid when you don't quite get it right...), dodging the eddies and trying to still be nice to your whānau when they're not paddling fast enough!...And then that satisfying feeling as you finally pull up your canoe at your destination each evening where it's just you, your crew, your tent and some kai you've cooked over your burner stove under the night sky. And all the hard mahi to get there is all of a sudden worth it.

As we prepare to say good-bye to 2023, it reminds me of those moments. There have no doubt been a few upside-down rapid rides this year, where we've taken in some water and had to work hard to bail it out. We've welcomed some new paddlers on the waka, fare welled others and all the while, continued to charter through some turbulent waters. But, as we pull our 2023 canoe up out of the water, I look back on all of those challenges that we have navigated as a team, and what rises up as the strongest memory for me, once again, is that unbreakable thread of aroha, family and community we witness every day.

WE ARE INSPIRED AND DEEPLY PRIVILEGED TO WALK ALONGSIDE THOSE WHO TRAVEL THEIR FINAL JOURNEYS HERE ON EARTH AND WITH THOSE WHO LOVE AND CARE FOR THEM.

As we close off for the year, we honour those who have passed in our care and whom we have had this amazing privilege to walk with and we stand with their whānau in their grief. We give thanks to every person, organisation, or group of people who have supported Hospice Whanganui this year – thank you for keeping our waka afloat. We give a shout-out to our three retail stores, our amazing volunteers, our Board and all of our kaimahi (staff) who passionately pick up their paddles every day to power our little waka and care for our people.

Merry Christmas Whanganui! We wish you peace and joy this season and we'll see you again in 2024. Tēnā koutou, tēnā koutou, tēnā tātou katoa.



Inaugural Hospice Antiques & Collectibles Auction raises over \$17,000

The success of the inaugural auction is a testament to the generosity and community spirit of the people of Whanganui. We would like to express our gratitude to everyone who made the auction possible, including the donors who contributed items for the auction, the volunteers and staff who helped with setup and organization, and the bidders who came out in force to support the cause.

We look forward to announcing the dates for the next Antiques & Collectibles Auction to be held next year. For information on how to donate auction items or how you can be involved email Kelly at kellys@hospicewhanganui.org.nz.

Check out some of the unique items that featured in this years auction!



HW for Good in the Hood



Through the Good in the Hood campaign, Z Stations in Whanganui handpicked ten community groups to receive a share of \$8,000. And guess what? Our hospice, Hospice Whanganui, made the cut!

Customers were handed tokens to cast their vote for their favourite local group. The money is then split based on the number of votes received.

This is the kind of community spirit that makes us proud to call Whanganui home. A million thanks to Z Station and all our wonderful voters!

Patient Social Days at Hospice Whanganui

This year our Whānau Support Team have been organising 'Patient Day' activities. These events are designed to uplift the spirits of patients and their families and provide an opportunity to create treasured memories.

The hospice team plans and executes a range of activities throughout, catering to the interests and abilities of our patients. Some of the activities have included a visit from the team at Canine Therapy Dogs Whanganui, music by Whanganui Highland Pipe Band and an extra special, uplifting Kapa Haka performance by Te Oranganui kaimahi.

These Social Day activities provide our patients a much-needed respite allowing them to engage in activities that bring them happiness and a sense of purpose. The hospice team is committed to creating a warm and welcoming environment for our patients and ensuring that they feel loved and supported throughout their journey.



Pasifika for Pasifika Expo 2023

It was a fun and exciting day for our Hospice team who hosted a stall at The Pasifika for Pasifika Expo held on October 28th at Springvale Stadium. A total of 40 stallholders and over 500 people attended the event.

The Expo was the first of this scale for the Whanganui Pasifika Community and was created with the aim to prevent Pacific people from feeling isolated or disconnected from community health services. It had a focus on building relationships through the event that would serve as a foundation for the future.

Our Hospice Whanganui booth was hosted by our partnership Coordinator, Melanie Cole, with our Samoan supporters Iutita Kilmister and Sue Tagaoi. Our stall offered beautiful Remembrance Rākau to give away - potted sunflowers and lavender, forgot-me-not and sunflower seeds to plant and precious stones accompanied by a poem that reflected their significance to grief.

Also representing from Hospice were our Pasifika staff members, Nursing Student Charlene McGeehan who painted faces for the day and Renae Kilmister who was the event photographer.

"IT WAS A REALLY FUN EVENT! THERE WAS ISLAND DANCING, SINGING, FOOD, SPORT, HEALTH INFO, CAREER INFO, YOU NAME IT, IT WAS ALL THERE! AS A SAMOAN, I WAS SO PROUD OF WHAT OUR PASIFIKA COMMUNITY ACHIEVED. I LOOK FORWARD TO BEING INVOLVED IN THE NEXT ONE"

- Renae, Fundraising and Communications Manager.

SHARING OUR SPECIAL MESSAGES OF THANKS

"We just want to thank you all for the wonderful care that you gave to Mum, Dad and all of us. We couldn't have kept her home without you. You made her last days much easier and the reassurance you gave us was out of this world. You are all very special people and we will be eternally grateful" - Patient Whānau.

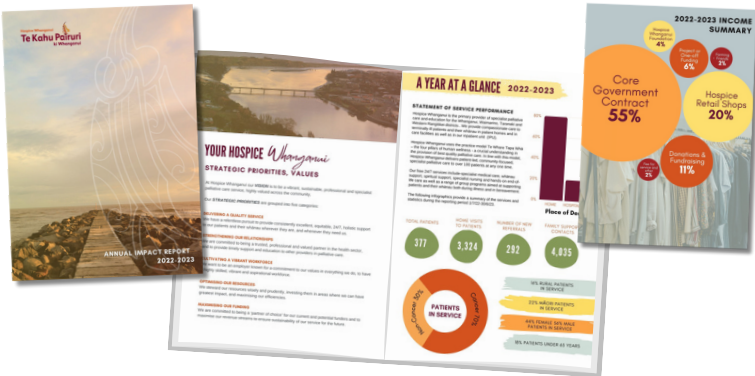
2022-2023 Annual Impact Report

WE ARE DELIGHTED TO PRESENT THE ANNUAL REPORT FOR HOSPICE WHANGANUI TO THE WHANGANUI COMMUNITY FOR THE 2022/23 FINANCIAL YEAR. THE ANNUAL REPORT HIGHLIGHTS THE SERVICES THAT HOSPICE PROVIDED TO THE WHANGANUI COMMUNITY OVER THE PAST YEAR.

What we know is that the demand for specialist palliative care services will continue to climb in our community year on year. This year we have cared for almost 400 patients and a similar number of whānau and we have seen an almost 30% increase in referrals on the previous year. Our clinical team has made almost 300 face-to-face visits to patients and their whānau each month on average. Our team of skilled nurses, care assistants, whānau support practitioners and doctors are out and about every day of the week supporting patients and their whānau to ensure they can continue to live life to the full, right to the end.

As our service continues to adapt to meet the growing demand for palliative care, we are especially conscious of the deep reliance that we have on our community for funding. This includes our retail stores, our corporate donors, and especially the individual supporters in our community who give so generously to Hospice. We could not provide this service without this generosity, and as we present our report, we extend our heartfelt and immense gratitude to you all.

You can download your copy or read online here - <https://hospicewhanganui.org.nz/news/2022-2023-hospice-whanganui-annual-report-now-available/>



Introducing Renae, Fundraising and Communications Manager

We are pleased to introduce Renae Kilmister who started her role as Fundraising and Communications Manager at Hospice Whanganui this year in early September.

She has come home to Whanganui after living in Australia for almost 20 years. For the past 7 years she has worked in indigenous health in communications and various media, as well as running events such as national conferences.

Her journey to Hospice began in January this year when her Uncle was diagnosed with a rare and aggressive cancer. She became his carer in his final weeks and says that it was the experience of working with the Hospice team that led her to this role.

“My uncle wouldn’t have wanted to be anywhere else but home, with his dog next to him, surrounded by family. The Hospice team made this possible. We could access them 24 hours a day, even with small matters such as changing batteries for the syringe driver. They were familiar faces, and reassuring, they were incredible.”

“WHEN THIS JOB WAS ADVERTISED, I THOUGHT ‘CAN I DO IT JUSTICE?’ I WANT TO MAKE IT HAPPEN SO OTHER PEOPLE IN THE COMMUNITY CAN GET THE SAME VITAL CARE THAT WE DID.”

“The people at Hospice are working for a purpose, you can sense such great empathy from the team, and they wear their hearts on their sleeves.”

“Everybody wraps around each other here, it’s so supportive, and the leadership is amazing.”



HOSPICE WHANGANUI CHARITY OF CHOICE FOR THE 2023 WHANGANUI RIVER CITY CHRISTMAS NIGHT MARKETS

We would like to say a huge thank you to the River City Christmas Markets for choosing us to receive the gold coin entry for this year’s market! It’s community support like this that keeps our service running.

New partnership with Air Whanganui providing support for Hospice Whanganui patients in need

We are thrilled to announce a heartwarming partnership with Air Whanganui who will provide vital assistance to our families in need!

Our collaboration focuses on supporting families who may face financial constraints during their times of need. The cost of transferring loved ones can be a significant concern for some so this partnership will mean we can help support those families by providing free transfers with Air Whanganui.

What makes this partnership even more special? The transfer will be facilitated using their new state-of-the-art patient transfer vehicles.

"WE BELIEVE IN GIVING BACK TO OUR COMMUNITY, AND THIS PARTNERSHIP IS A TESTAMENT TO THAT COMMITMENT.

TOGETHER, WE'RE MAKING A DIFFERENCE IN THE LIVES OF FAMILIES WHO MAY NOT HAVE HAD ACCESS TO THIS CRUCIAL SUPPORT OTHERWISE."

- Air Whanganui CEO, Dean Martin.

We are so grateful to Air Whanganui. This service truly means the world to us and we can't wait to share more on this special partnership in future.

Find out more about Air Whanganui here <https://www.airwhanganui.co.nz/>



50% OFF



TUESDAY 19 DECEMBER

50% OFF EVERYTHING STOREWIDE AT ALL THREE HOSPICE SHOPS

Check out the details on facebook by clicking below:

[Boutique](#) 171 Victoria Avenue / [Gonville](#) 73 Tawa Street / [Whanganui East](#) 74 Duncan Street

Farming Friends of Hospice

Farming Friends of Hospice Whanganui is a charitable trust established in 2005 to support Hospice Whanganui financially through their grazing scheme.

Farming Friends committee buy cattle which are delivered to the farmer who has agreed to participate in the grazing scheme. When the cattle have reached slaughter weight, arrangements are made to have them processed, with the proceeds going to Farming Friends. Currently there are 175 participant farmers involved in this scheme that supports Hospice Whanganui and the grazing scheme's success means that FFHW are able to donate a whopping \$60,000 a year!

If you want to know more about being a Farming Friend and grazing cattle, being a member of the committee, or becoming a Trustee please contact Brian Doughty on r-bdoughty@xtra.co.nz



Whanganui Hospice CEO Davene Vroon and Brian Doughty. Photo / Bevan Conley

Recipe for the festive season



Tim Tam Christmas Balls

These no-cooking-needed, Tim Tam balls are made with just 3-ingredients! Kids will love helping you roll these through chocolate sprinkles to coat.

Ingredients

- 200 g packet Tim Tam biscuits, broken into pieces
- 125 g cream cheese, softened
- ½ cup chocolate sprinkles, to roll

Method

- Place the broken Tim Tams and cream cheese in the bowl of food processor and process until smooth.
- Roll mixture into bite-sized balls, place into a large zip-lock bag with chocolate sprinkles. Shake to coat. Store in an airtight container in the fridge

5 WAYS TO DONATE

- INTERNET BANKING:** Pay directly by internet banking to our bank account 03-0791-0571167-00 using NL01 as the code and your phone number in reference details.
- BY POST:** List your credit card (or visa debit card) details and amount to donate in the cut-out panel below and post it in an envelope to us at PO Box 4284, Whanganui.
- OUR WEBSITE:** Search the internet for <https://hospicewhanganui.org.nz/> and click the DONATE button to enter your details and make a payment OR scan the QR code here to take you directly to the online form.
- BY CASH:** Drop off cash or swipe your eft-pos debit card at one of our three hospice shops.
- GIVEALITTLE:** You can start your own fundraising initiative by using our Givealittle page <https://givealittle.co.nz/org/hospicewgi>



Print this page and cut out section to post.

Yes, I would like to support Hospice Whanganui.

Title Dr. Mr. Mrs. Ms. Specify _____

Name

Address

Phone

Email

Please send me information on:

- 'Hospice Heroes' regular giving program Volunteering Including Hospice in my will

Please find enclosed my credit card donation of \$ _____

Please debit my Visa Mastercard

No.

Exp date /

Name on card

Signature

Thank you for your generous support. We receive only half our funding from government. Your monies help keep palliative care free to patients with life-limiting illnesses in Whanganui.



Charities Commission
No. CC10352



Please help us to help our community by joining our incredible Hospice Heroes

One of the most powerful ways we can ensure that our services continue to flourish within our community is through regular donations. Every year, we must seek out over one million dollars to keep our services running, and donations are essential in this quest.

Your contribution not only helps us pay for medications and equipment needed to fully support our families, but also contributes to securing the services of highly skilled and specialist staff. It also helps ensure these services to patients and families remain free of charge.

You can join 'Hospice Heroes' for as long or as short as you like. We are deeply appreciative of all contributions. We also recognise that circumstances do change and that people may need to review their membership from time to time.

If you would like to join Hospice Heroes, visit our website <https://hospicewhanganui.org.nz/support-us/hospice-heroes/> or email accounts@hospice.org.nz

Thank you to all who give

We want to say a special thank you to our retail teams – paid and volunteer staff – who have worked so hard to keep our three amazing shops running and flourishing. Our retail funding remains critical to the ongoing financial viability of Hospice and we are so thankful for their amazing mahi.

To all our other volunteers who serve in so many ways, whether in the garden, at reception or at events, we appreciate you all and love having you as part of our team.

To all of our steadfast and generous supporters, we give our deepest thanks and appreciation. To everyone in our community who has made a donation or a bequest to our organisation over this past year, we say a huge thank you. It makes a tangible difference.

To the Hospice Whanganui Foundation, as well as our Farming Friends of Hospice, who support us with running capital every month, thank you for continuing to stand with us.

To the amazing corporate and community donors who have partnered with us, we are indebted to you all. We give a special shout-out to Mitre 10, Farmers, McCarthy's Transport, Z Energy and The Whanganui Christmas Markets for your ongoing support of Hospice.

We look forward to connecting with you all again in 2024!



Your Donations:

To arrange for collection of large/bulk or furniture collections call Whanganui East on 06 3431292 and Gonville on 06 3448093.

Visit our Hospice Shops this holiday season!

The contributions that our retail group make towards the funding gap of providing our palliative care services cannot be underestimated. Approximately 70% of all our community fundraising is now achieved from our Hospice Shop sales each year and there is potential to generate even more income from generous donations given to our stores every day.

Our three stores will be open between Christmas and the New Year. You can find out more details on their opening hours by clicking on their individual Facebook pages listed below.

Hospice Boutique, 171 Victoria Avenue
<https://www.facebook.com/hospiceboutique>

Gonville Hospice Shop, 73 Tawa Street
<https://www.facebook.com/gonvillehospiceshop>

Whanganui East Hospice Shop, 74 Duncan Street
<https://www.facebook.com/whanganuieasthospiceshop>

Follow us on social media

You can keep up-to-date with all our activities by following us online! Interact and message us via our online platforms to stay connected with all things Hospice.

Visit our website www.hospicewhanganui.org.nz or click below to follow us on social media.



[hospicewhanganui](https://www.facebook.com/hospicewhanganui)



[hospice_whanganui/](https://www.instagram.com/hospice_whanganui/)

